

BLOCK A

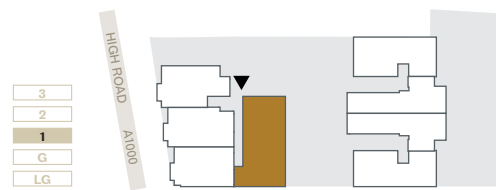
FLAT 1

90 sqm / 969 sqft

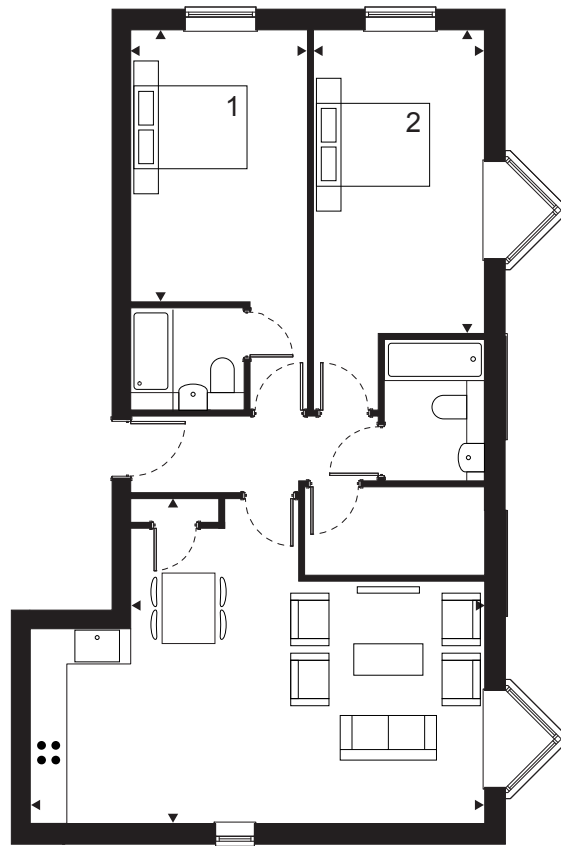
2 Bedrooms

2 Bathrooms

First Floor



Lounge/Dining/Kitchen	7.7 × 5.5 m
Bedroom 1	4.6 × 3.0 m
Bedroom 2	5.2 × 2.9 m
Total	90 sqm
	969 sqft



BLOCK A

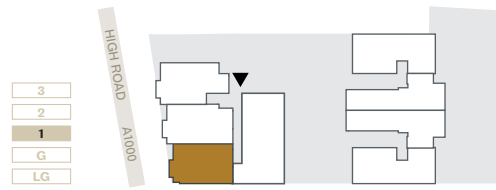
FLAT 2

52.4 SQM / 564 SQFT

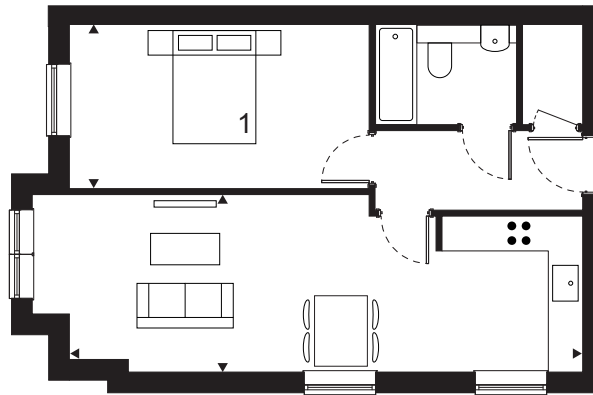
1 Bedroom

1 Bathroom

First Floor



Lounge/Dining/Kitchen	8.7 × 3.0 m
Bedroom 1	5.1 × 2.8 m
Total	52.4 sqm
	564 sqft



BLOCK A

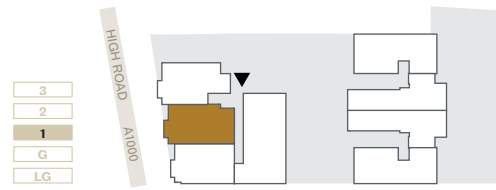
FLAT 3

55.7 SQM / 600 SQFT

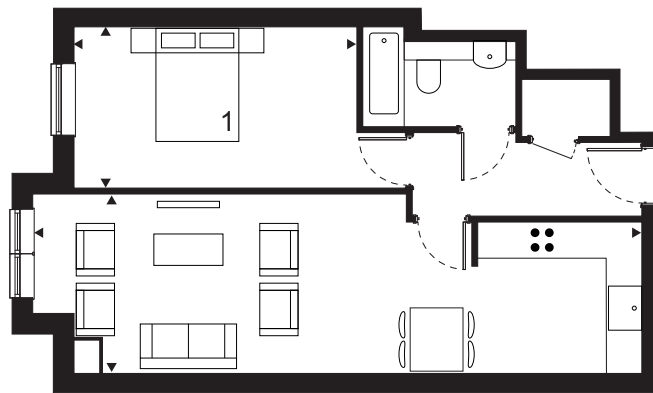
1 Bedroom

1 Bathroom

First Floor



Lounge/Dining/Kitchen	9.7 x 3.0 m
Bedroom 1	4.8 x 2.8 m
Total	55.7 sqm
	600 sqft



BLOCK A

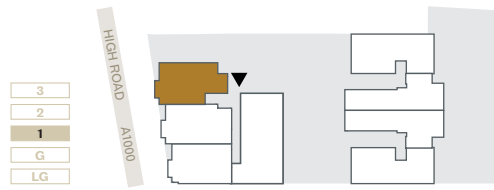
FLAT 4

51.9 SQM / 559 SQFT

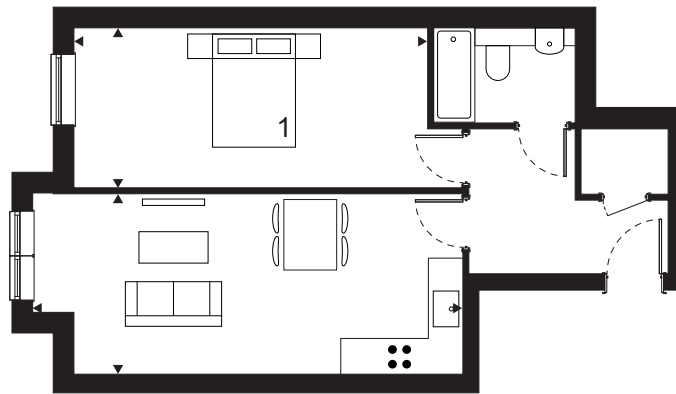
1 Bedroom

1 Bathroom

First Floor



Lounge/Dining/Kitchen	7.3 x 3.1 m
Bedroom 1	6.2 x 2.7 m
Total	51.9 sqm
	559 sqft



BLOCK A

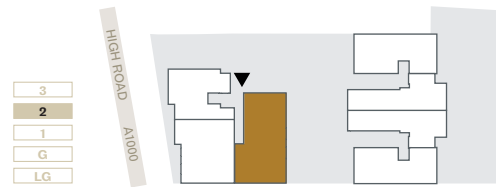
FLAT 5

92.6 sqm / 997 sqft

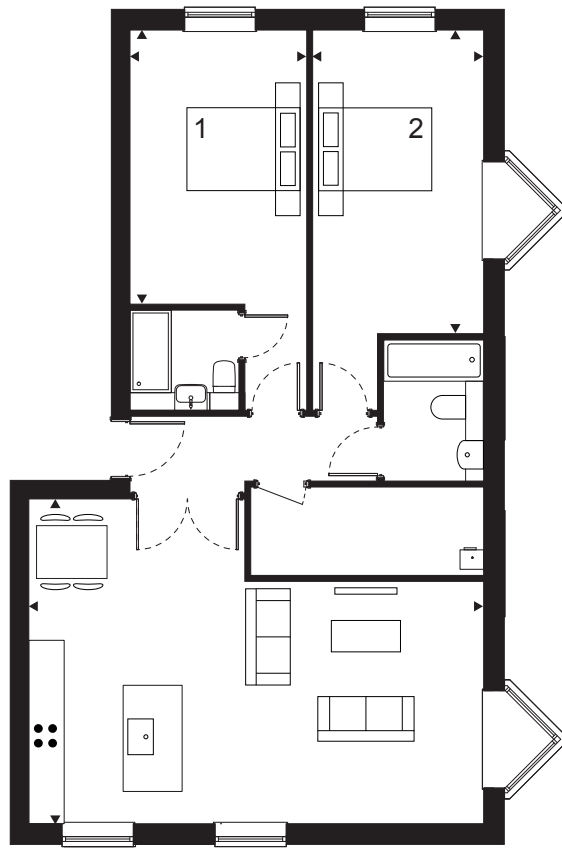
2 Bedrooms

2 Bathrooms

Second Floor



Lounge/Dining/Kitchen	7.7 x 5.5 m
Bedroom 1	4.7 x 3.0 m
Bedroom 2	5.2 x 2.9 m
Total	92.6 sqm
	997 sqft



BLOCK A

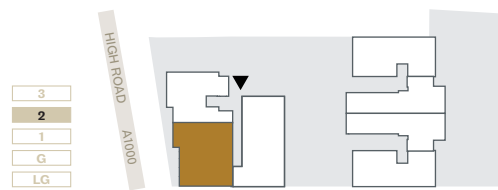
FLAT 6

76 SQM / 818 SQFT

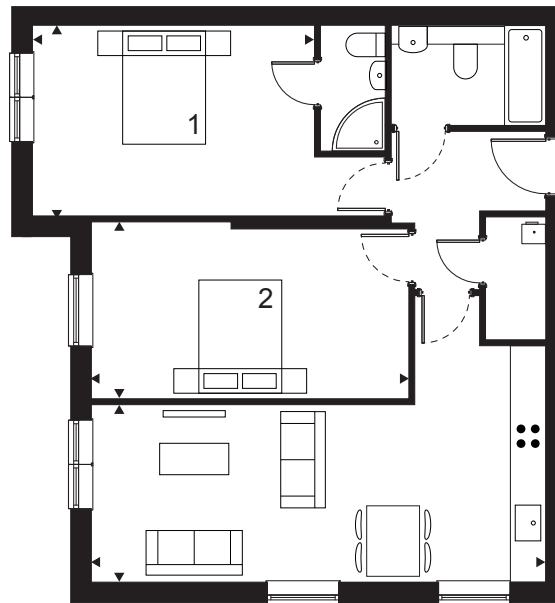
2 Bedrooms

2 Bathrooms

Second Floor



Lounge/Dining/Kitchen	7.7 x 4.0 m
Bedroom 1	5.0 x 3.2 m
Bedroom 2	5.4 x 3.0 m
Total	76 sqm
	818 sqft



BLOCK A

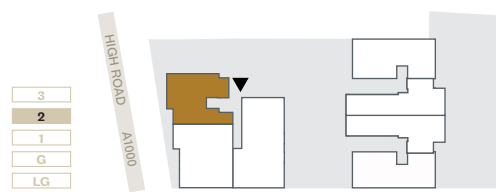
FLAT 7

55.6 sqm / 598 sqft

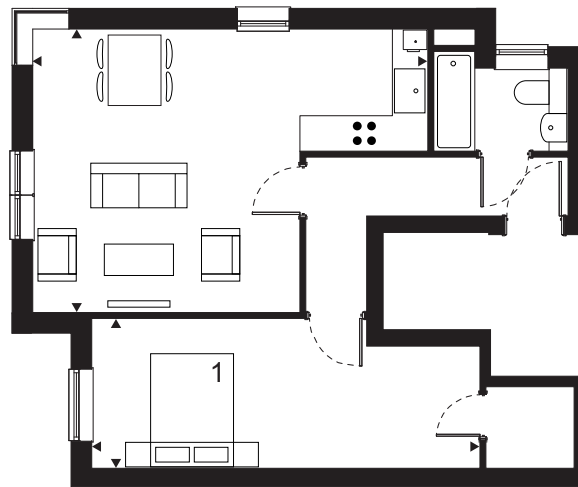
1 Bedroom

1 Bathroom

Second Floor



Lounge/Dining/Kitchen	6.7 x 4.8 m
Bedroom 1	6.7 x 2.5 m
Total	55.6 sqm
	598 sqft



BLOCK A

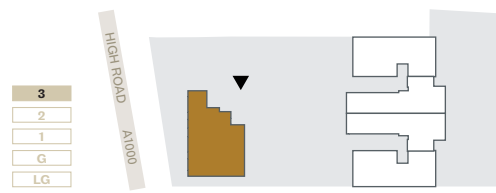
FLAT 8

83.6 SQM / 900 SQFT

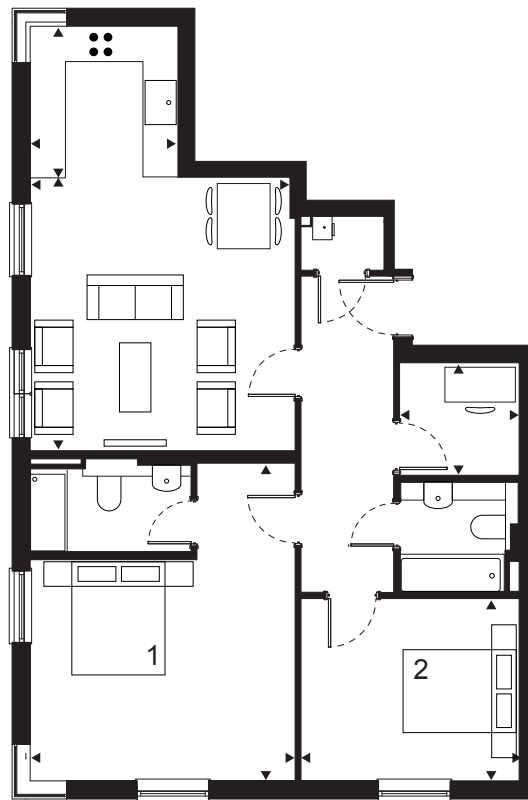
2 Bedrooms

2 Bathrooms

Third Floor



Lounge/Dining/Kitchen	7.3 x 4.6 m
Bedroom 1	5.4 x 4.6 m
Bedroom 2	3.8 x 3.1 m
Study	2.3 x 2.1 m
Total	83.6 sqm
	900 sqft



BLOCK B

FLAT 1

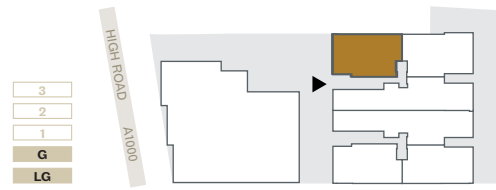
78.6 sqm / 846 sqft

2 Bedrooms

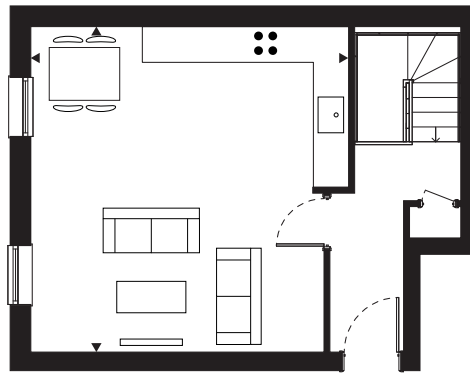
1 Bathroom

1 Lightwell

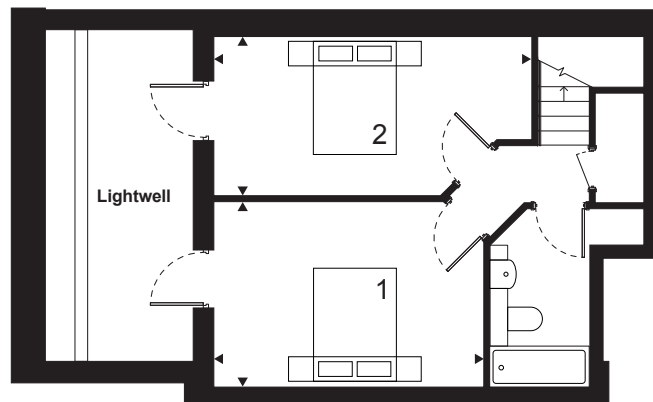
Lower Ground & Ground Floor



Lounge/Dining/Kitchen	5.5 x 5.4 m
Bedroom 1	4.6 x 3.1 m
Bedroom 2	5.4 x 2.7 m
Lightwell	14.1 sqm
Total	78.6 sqm
	846 sqft



Ground Floor



Lower Ground Floor

BLOCK B

FLAT 2

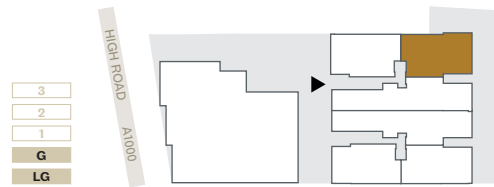
66 sqm / 710 sqft

2 Bedrooms

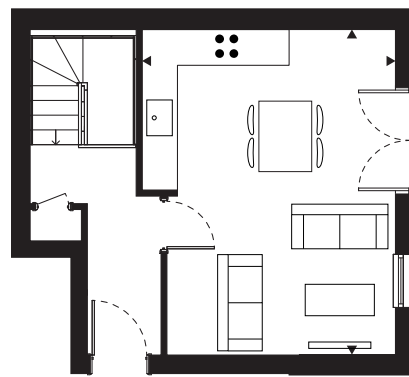
1 Bathroom

1 Lightwell

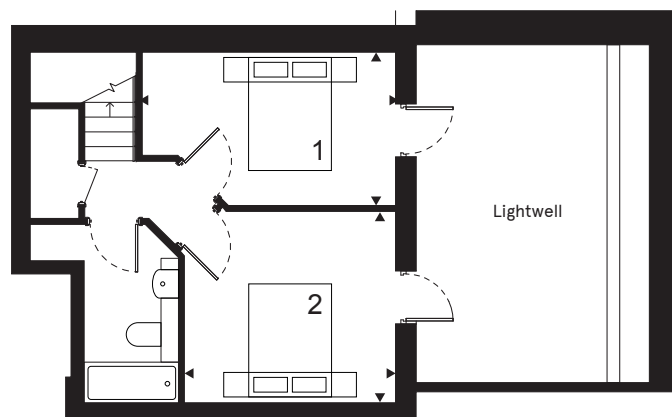
Lower Ground & Ground Floor



Lounge/Dining/Kitchen	5.5 x 3.9 m
Bedroom 1	4.3 x 2.6 m
Bedroom 2	3.6 x 3.2 m
Lightwell	22.7 sqm
Total	66 sqm
	710 sqft



Ground Floor



Lower Ground Floor

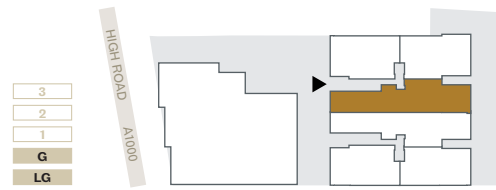
BLOCK B

FLAT 3

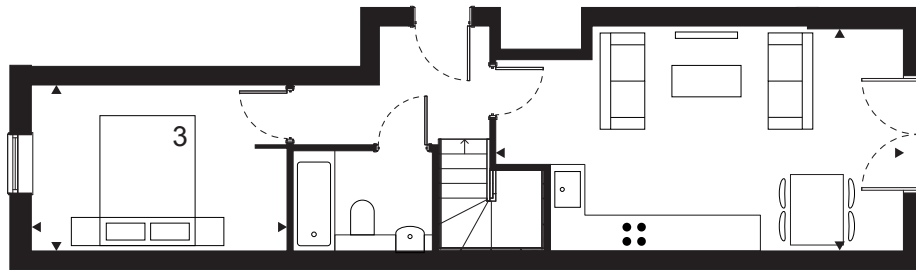
107.7 SQM / 1,159 SQFT

3 Bedrooms
3 Bathrooms
2 Lightwells

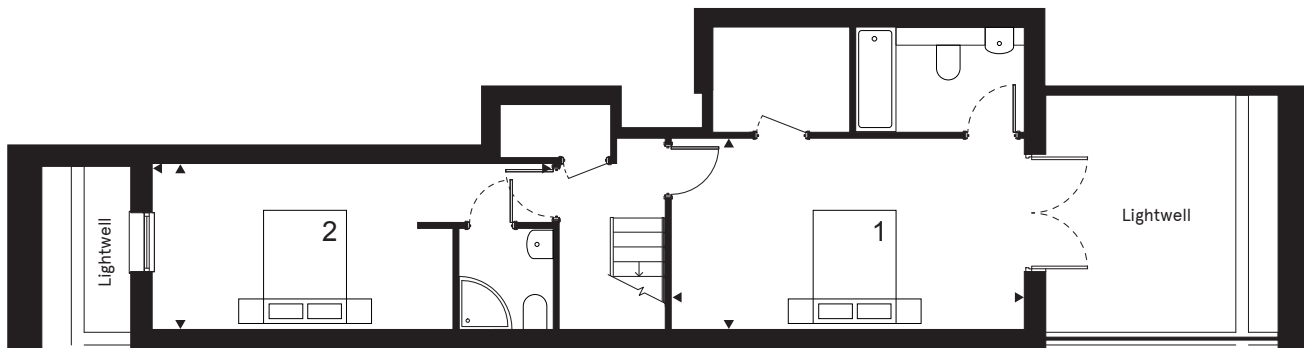
Lower Ground & Ground Floor



Lounge/Dining/Kitchen	6.9 x 3.8 m
Bedroom 1	6.0 x 3.2 m
Bedroom 2	6.8 x 2.8 m
Bedroom 3	4.3 x 2.8 m
Lightwell 1 (Front)	4.2 sqm
Lightwell 2 (Rear)	15.8 sqm
Total	107.7 sqm
	1,159 sqft



Ground Floor



Lower Ground Floor

BLOCK B

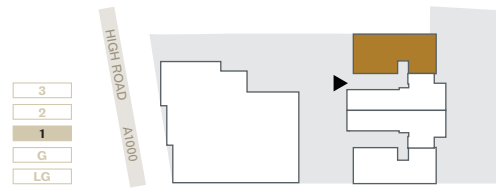
FLAT 4

63.8 sqm / 687 sqft

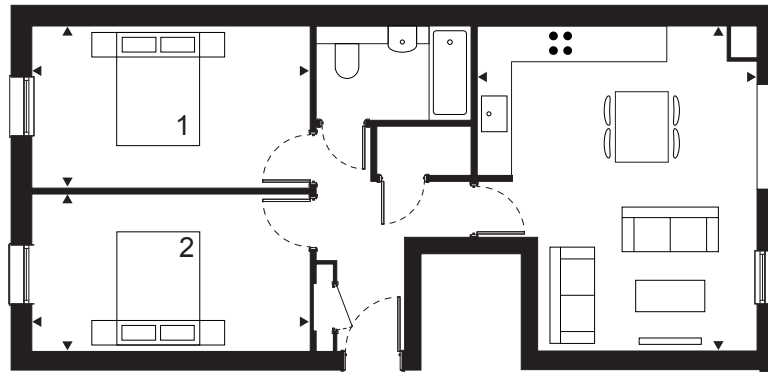
2 Bedrooms

1 Bathroom

First Floor



Lounge/Dining/Kitchen	5.5 x 4.8 m
Bedroom 1	4.7 x 2.8 m
Bedroom 2	4.7 x 2.7 m
Total	63.8 sqm
	687 sqft



BLOCK B

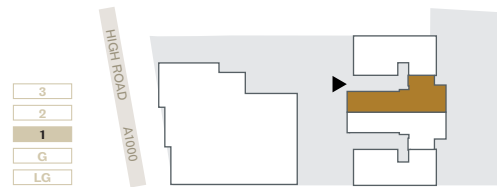
FLAT 5

53.5 sqm / 576 sqft

1 Bedroom

1 Bathroom

First Floor



Lounge/Dining/Kitchen 5.7 x 4.9 m

Bedroom 1 5.7 x 2.8 m

Total 53.5 sqm

576 sqft



BLOCK B

FLAT 6

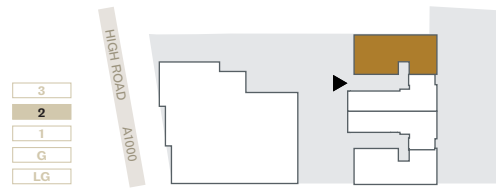
63.8 sqm / 687 sqft

2 Bedrooms

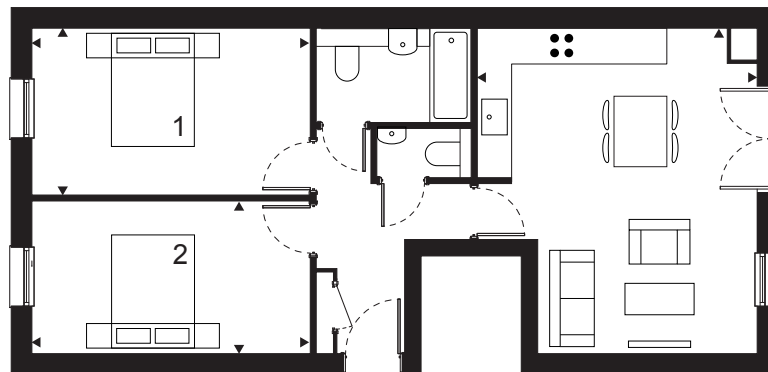
1 Bathroom

1 WC

Second Floor



Lounge/Dining/Kitchen	5.5 x 4.8 m
Bedroom 1	4.7 x 2.8 m
Bedroom 2	4.7 x 2.6 m
Total	63.8 sqm
	687 sqft



BLOCK B

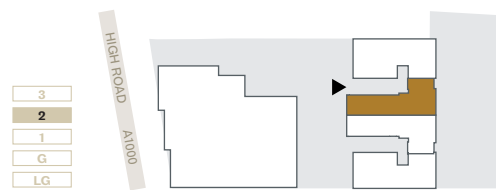
FLAT 7

47.8 SQM / 515 SQFT

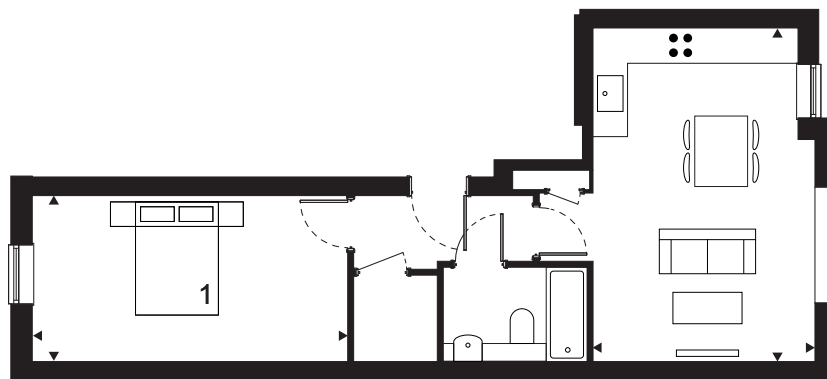
1 Bedroom

1 Bathroom

Second Floor



Lounge/Dining/Kitchen	5.7 x 3.8 m
Bedroom 1	5.3 x 2.8 m
Total	47.8 sqm
	515 sqft



BLOCK B

FLAT 8

76.5 sqm / 823 sqft

2 Bedrooms

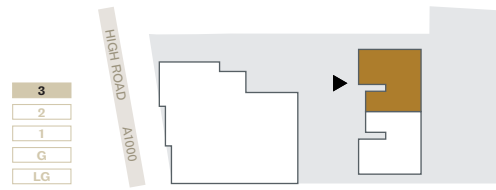
1 Bathroom

1 WC

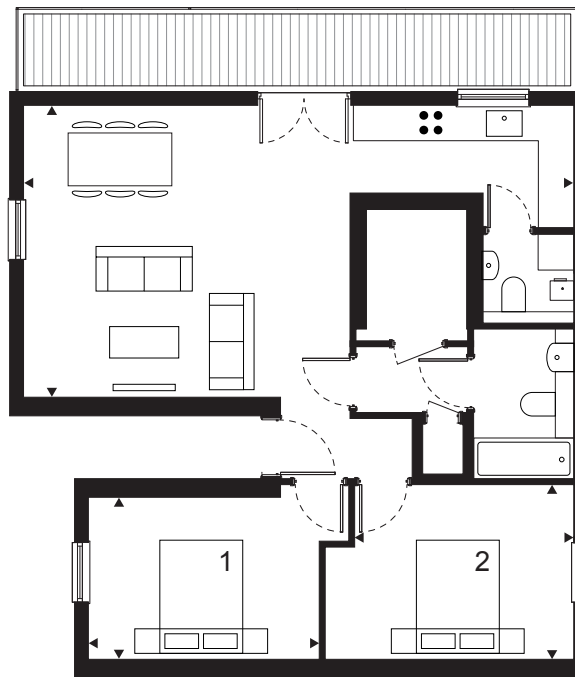
1 Terrace



Third Floor



Lounge/Dining/Kitchen	5.5 x 5.0 m
Bedroom 1	3.9 x 2.7 m
Bedroom 2	3.7 x 3.0 m
Terrace	13.6 sqm
Total	76.5 sqm
	823 sqft



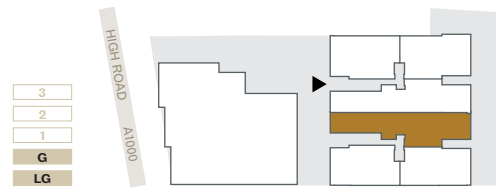
BLOCK B

FLAT 9

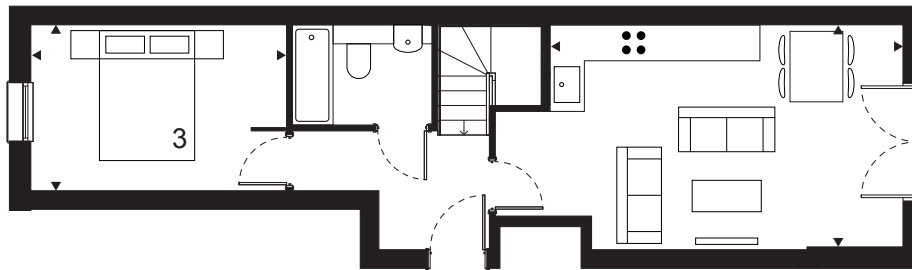
108 sqm / 1,163 sqft

3 Bedrooms
3 Bathrooms
2 Lightwells

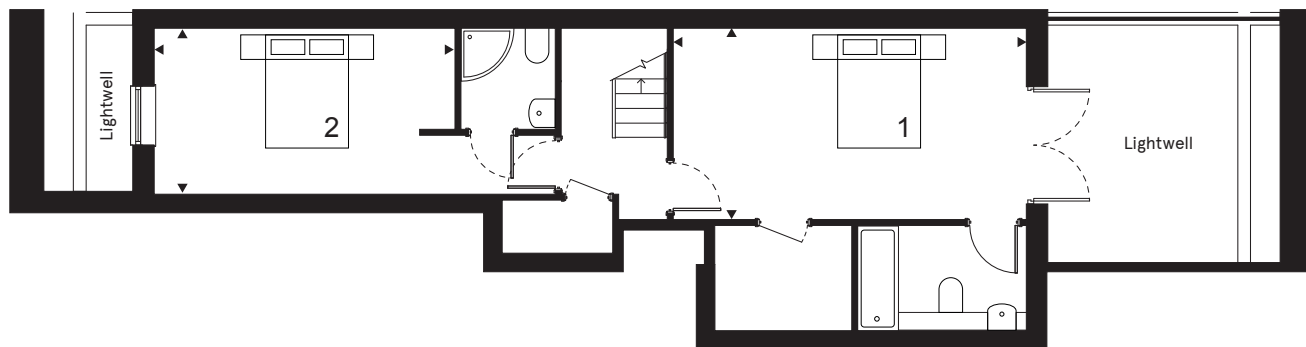
Lower Ground & Ground Floor



Lounge/Dining/Kitchen	6.9 x 3.8 m
Bedroom 1	6.0 x 3.2 m
Bedroom 2	6.8 x 2.8 m
Bedroom 3	4.3 x 2.8 m
Lightwell 1 (Front)	4.2 sqm
Lightwell 2 (Rear)	15.8 sqm
Total	108 sqm
	1,163 sqft



Ground Floor



Lower Ground Floor

BLOCK B

FLAT 10

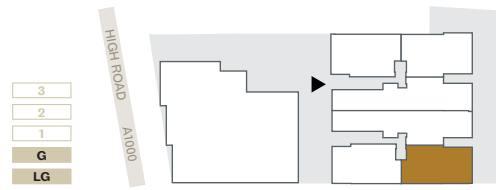
57.5 SQM / 619 SQFT

2 Bedrooms

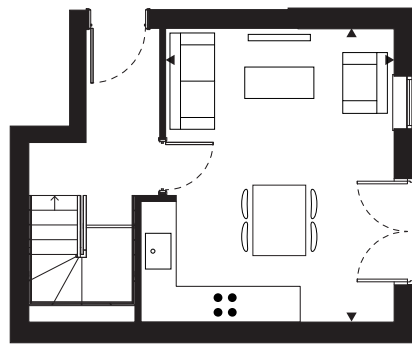
1 Bathroom

1 Lightwell

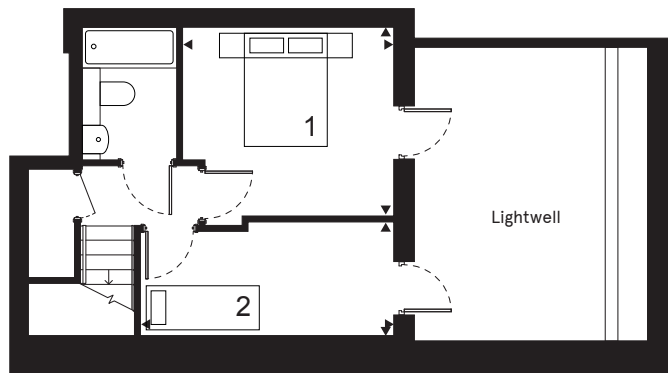
Lower Ground & Ground Floor



Lounge/Dining/Kitchen	5.0 x 4.3 m
Bedroom 1	3.6 x 3.2 m
Bedroom 2	4.3 x 1.9 m
Lightwell	19.5 sqm
Total	57.5 sqm
	619 sqft



Ground Floor



Lower Ground Floor

BLOCK B

FLAT 11

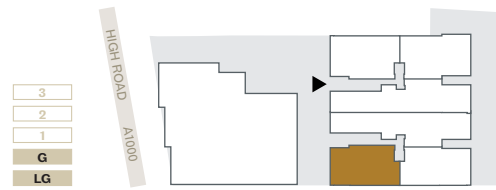
68.9 sqm / 742 sqft

2 Bedrooms

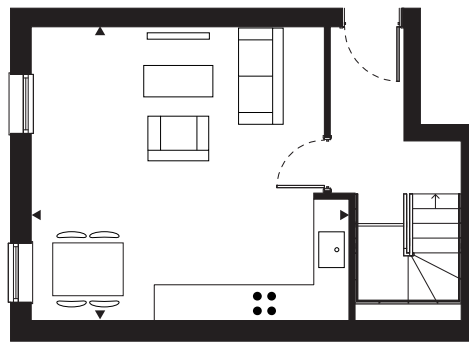
1 Bathroom

1 Lightwell

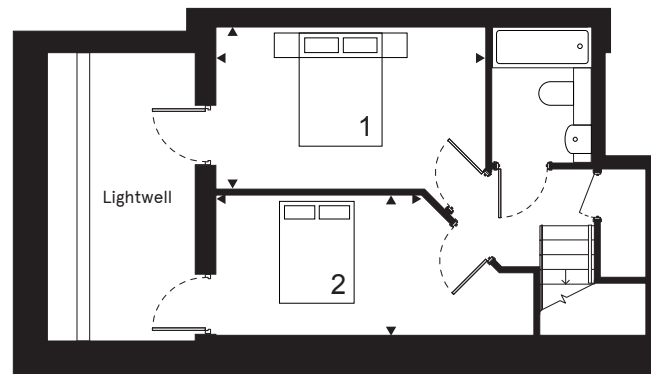
Lower Ground & Ground Floor



Lounge/Dining/Kitchen	5.4 x 5.0 m
Bedroom 1	5.4 x 2.4 m
Bedroom 2	4.6 x 2.8 m
Lightwell	12.1 sqm
Total	68.9 sqm
	742 sqft



Ground Floor



Lower Ground Floor

BLOCK B

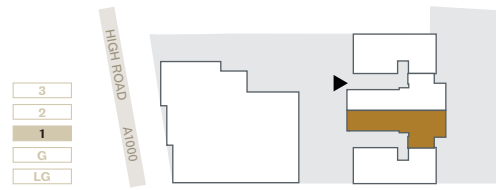
FLAT 12

53.5 sqm / 576 sqft

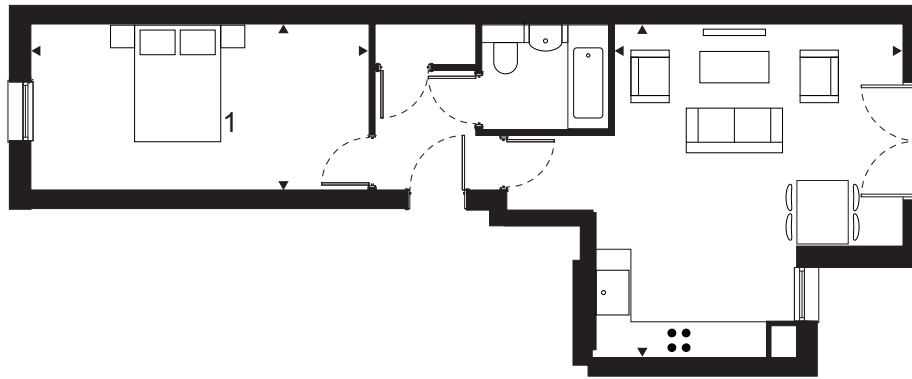
1 Bedroom

1 Bathroom

First Floor



Lounge/Dining/Kitchen	5.7 x 4.9 m
Bedroom 1	5.7 x 2.8 m
Total	53.5 sqm
	576 sqft



BLOCK B

FLAT 13

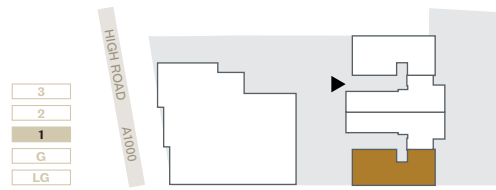
57.9 SQM / 623 SQFT

2 Bedrooms

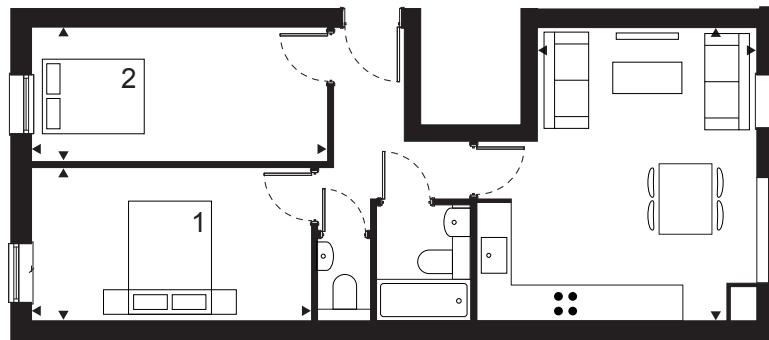
1 Bathroom

1 WC

First Floor



Lounge/Dining/Kitchen	5.0 x 4.8 m
Bedroom 1	5.0 x 2.3 m
Bedroom 2	4.8 x 2.6 m
Total	57.9 sqm
	623 sqft



BLOCK B

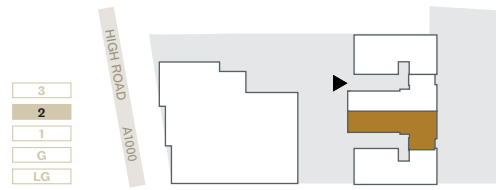
FLAT 14

47.8 sqm / 515 sqft

1 Bedroom

1 Bathroom

Second Floor



Lounge/Dining/Kitchen	5.7 x 3.8 m
Bedroom 1	5.3 x 2.8 m
Total	47.8 sqm
	515 sqft



BLOCK B

FLAT 15

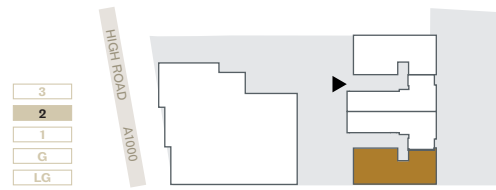
57.9 SQM / 623 SQFT

2 Bedrooms

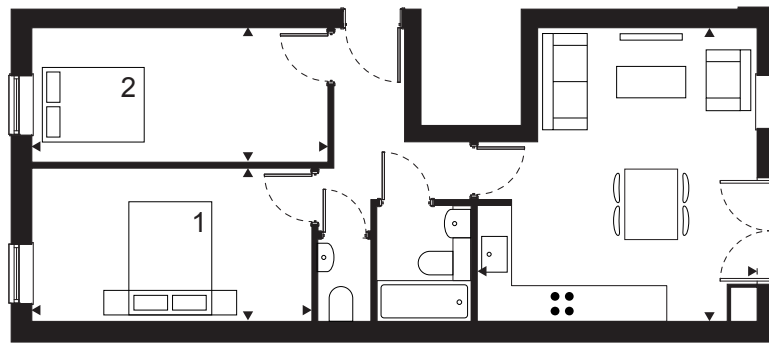
1 Bathroom

1 WC

Second Floor



Lounge/Dining/Kitchen	5.0 x 4.8 m
Bedroom 1	4.8 x 2.6 m
Bedroom 2	5.0 x 2.3 m
Total	57.9 sqm
	623 sqft



BLOCK B

FLAT 16

76.5 sqm / 900 sqft

2 Bedrooms

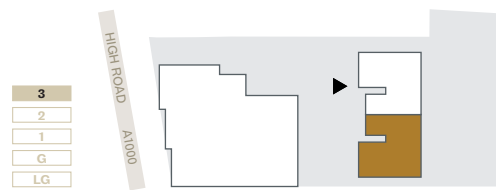
1 Bathroom

1 WC

1 Terrace



Third Floor



Lounge/Dining/Kitchen	5.5 x 5.0 m
Bedroom 1	3.9 x 2.7 m
Bedroom 2	3.7 x 3.0 m
Terrace	10.4 sqm
Total	76.5 sqm
	900 sqft

