

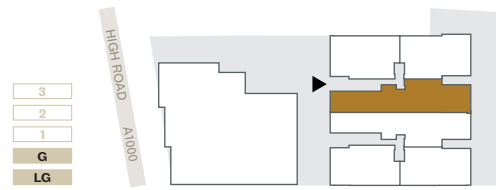
BLOCK B

FLAT 3

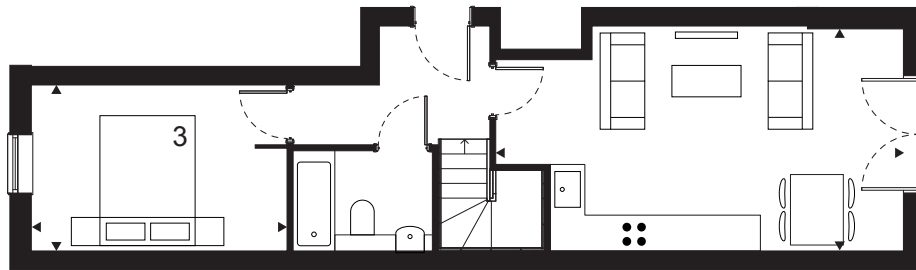
107.7 SQM / 1,159 SQFT

3 Bedrooms
3 Bathrooms
2 Lightwells

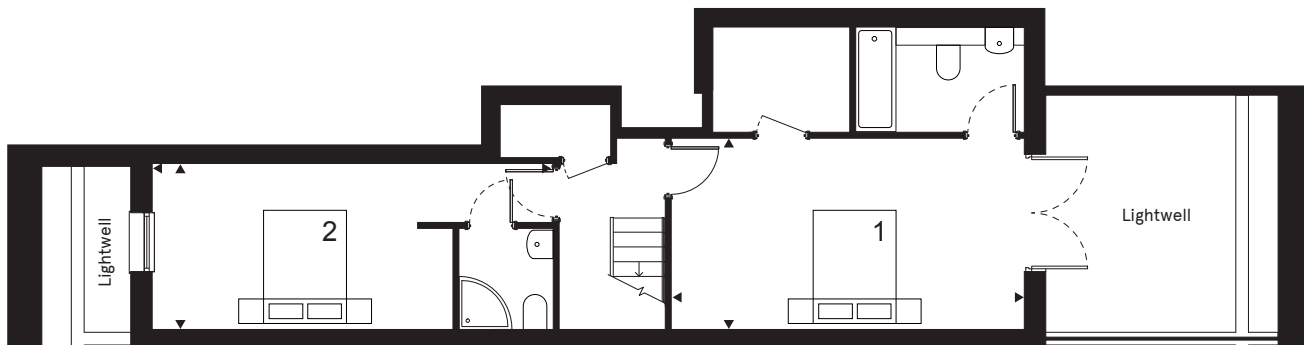
Lower Ground & Ground Floor



| | |
|-----------------------|------------------|
| Lounge/Dining/Kitchen | 6.9 x 3.8 m |
| Bedroom 1 | 6.0 x 3.2 m |
| Bedroom 2 | 6.8 x 2.8 m |
| Bedroom 3 | 4.3 x 2.8 m |
| Lightwell 1 (Front) | 4.2 sqm |
| Lightwell 2 (Rear) | 15.8 sqm |
| Total | 107.7 sqm |
| | 1,159 sqft |



Ground Floor



Lower Ground Floor