

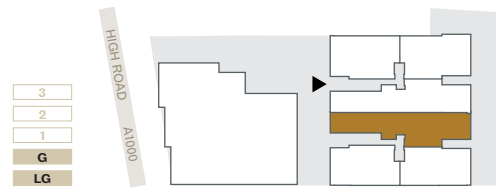
## BLOCK B

### FLAT 9

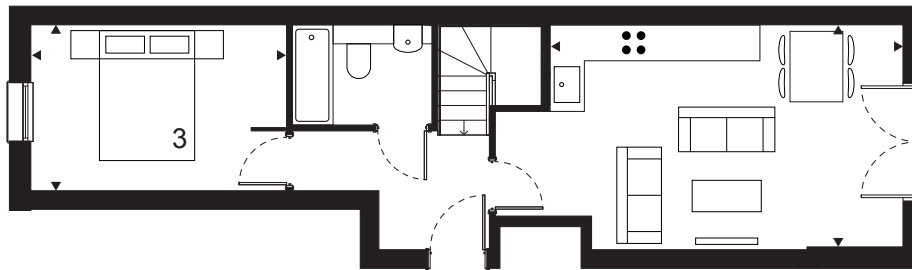
108 sqm / 1,163 sqft

3 Bedrooms  
3 Bathrooms  
2 Lightwells

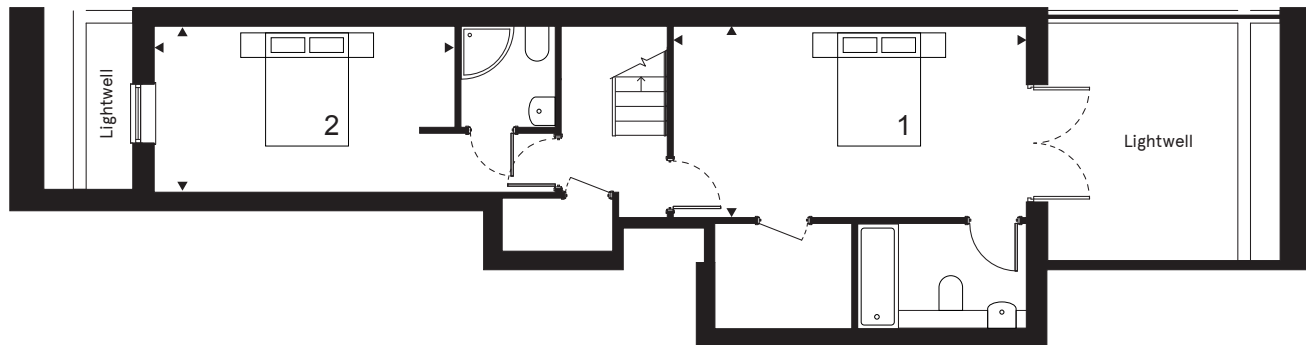
Lower Ground & Ground Floor



Lounge/Dining/Kitchen	6.9 x 3.8 m
Bedroom 1	6.0 x 3.2 m
Bedroom 2	6.8 x 2.8 m
Bedroom 3	4.3 x 2.8 m
Lightwell 1 (Front)	4.2 sqm
Lightwell 2 (Rear)	15.8 sqm
<b>Total</b>	<b>108 sqm</b>
	1,163 sqft



Ground Floor



Lower Ground Floor